

Wolverhampton City Council

OPEN DECISION ITEM

Health Scrutiny Panel

Date **18.7.13**

Originating Service Group(s) **West Midlands Ambulance Service**

Contact Officer(s)/ **Diane Lee Assistant Chief Executive Officer**

Telephone Number(s)

Title **West Midlands Ambulance Service/ Update on Foundation Trust Application and Make Ready**

RECOMMENDATION

That the Health Scrutiny Panel considers and comments on the presentation.



Diane Lee Assistant Chief Executive Officer



**Wolverhampton Health Scrutiny Panel
18 July 2013**

Trust us **to care.**



Firmographics

- Established in July 2006 merging with Staffordshire in October 2007
- Over 532,000 emergency patient journeys annually
- 5.4 million population
- Over 5,000 square miles, 80% rural
- Approaching 3000 999 calls per day
- £200 million budget
- Fleet of over 850 vehicles
- 4,000 Staff and 1500 Volunteers
- 4 Air Ambulance Helicopters



Trust us to care.



Trust Vision

Vision

Delivering the right patient care, in the right place, at the right time, through a skilled and committed workforce, in partnership with local health economies

Strategic Objectives

Achieve Quality and Excellence

Accurately assess patient need and direct resources appropriately

Establish market position as an Emergency Healthcare Provider

Work in Partnership

Values

- World Class Service
- Patient Centred
- Dignity and Respect for All
- Skilled Workforce
- Teamwork
- Effective Communication

Trust us to care.



Foundation Trust – Where are we?

Authorised as an NHS
Foundation Trust
1 January 2013

Licensed
1 April 2013

Trust us to care.



What is a Foundation Trust?

- **Are still very much part of the NHS**
 - Care is free at the point of delivery
 - Greater public and stakeholder involvement
 - Members
- **Have National standards and inspection**
 - Inspection by the CQC and regulated by Monitor
 - Performance ratings published
 - More focus on clinical outcomes
- **Become a Public Benefit Corporation**
 - Based on Co-operative model
 - Public and staff members



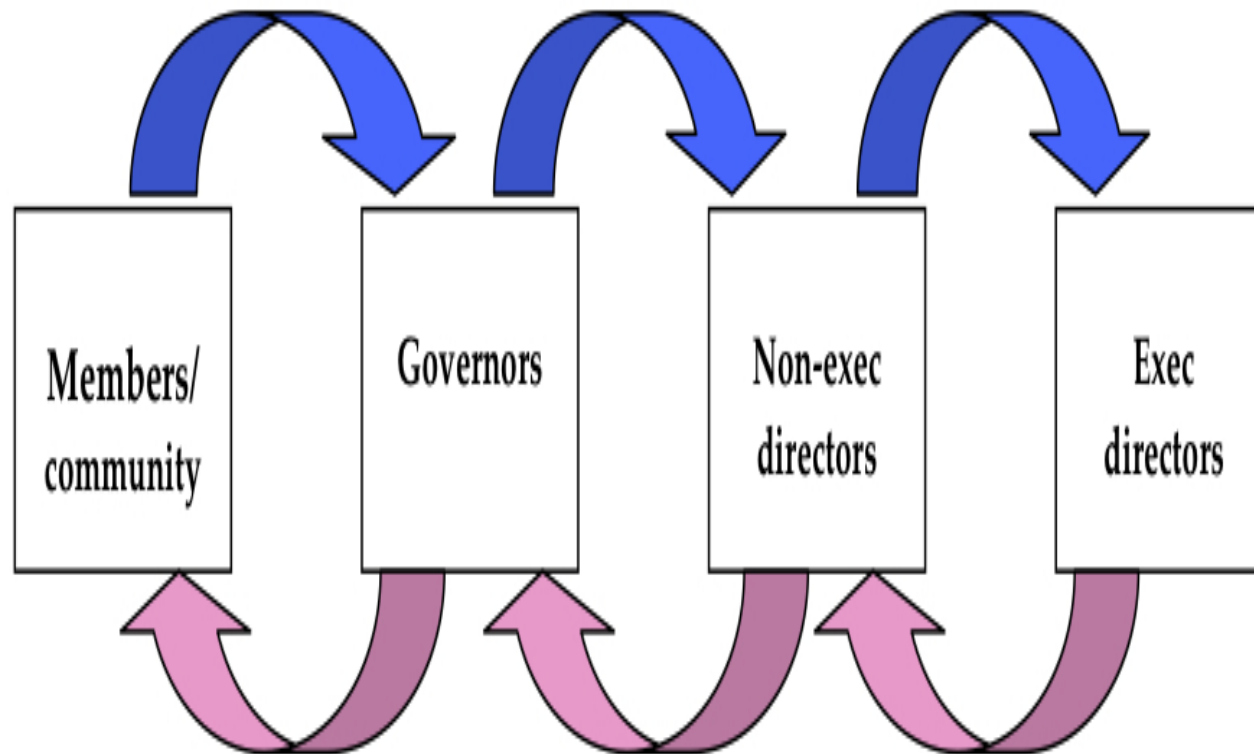
Foundation Trust Freedoms

NHS Foundation Trusts:

- Are free from central government control and are able to decide how to improve their services
- Can retain any surpluses they generate to invest in new services, and can borrow money to support these investments; and
- Are accountable to their local communities; local people can become members and governors



Internal Governance Arrangements





Foundation Trust Members

- **Membership is FREE**
- Receive regular updates about the Trust
- Visit the organisation
- Give feedback on proposals
- Elect Governors who will sit on the Members Council





Membership Plan, and Members Council

| | Membership | | | Governors |
|-----------|------------|-------|-----------|-----------|
| | July 2013 | Plan | + 2 years | |
| Public | 8,095 | 7,500 | 10,000 | 15 |
| Staff | 3,502 | 2,000 | 2,000 + | 5 |
| Appointed | | N/A | | 8 |
| Total | 11,597 | 9,500 | 12,000 + | 28 |

Has Elected



The Members Council

The Members Council consists of 28 Governors

Staff have 5 Elected Governors

| | | | | |
|--|---------------------------------------|-------------------------------------|-------------------|--|
| Emergency and Urgent Operational Staff (2) | Emergency Operations Centre Staff (1) | Non Emergency Operational Staff (1) | Support Staff (1) | |
|--|---------------------------------------|-------------------------------------|-------------------|--|

Public have 15 Elected Governors

| | | | | |
|-----------------|----------------|-------------------|-------------------|-------------------------------|
| West Mercia (3) | Birmingham (3) | Black Country (3) | Staffordshire (3) | Coventry and Warwickshire (3) |
|-----------------|----------------|-------------------|-------------------|-------------------------------|

There are also 8 Appointed Governors (1 each of the following)

| | | | | |
|---|---|-------------------------|---------------------|-------------------------------------|
| South Staffs & Shropshire Healthcare NHS Foundation Trust | Malvern Hills District Council | Birmingham City Council | Coventry University | West Midlands Fire & Rescue Service |
| Community First Responders | University Hospital Birmingham NHS Foundation Trust | St John Ambulance | | |



Roles & Responsibilities of the Members Council

- Appointing or removing the Chairman and NEDs
- Deciding the remuneration, allowances, and other terms and conditions of office of the Non-Executive Directors
- Appointing or removing Trust Auditor
- Considering membership disputes
- Considering resolutions to remove a Governor
- Approving an appointment of the Chief Executive (and Accounting Officer)
- Providing the views of the Members Council to Trust Directors for the Forward Plan
- Considering the approved Annual Accounts, any report of the Auditor on them and the Annual Report



Thank You

Any Questions?





Presented by Nick Henry

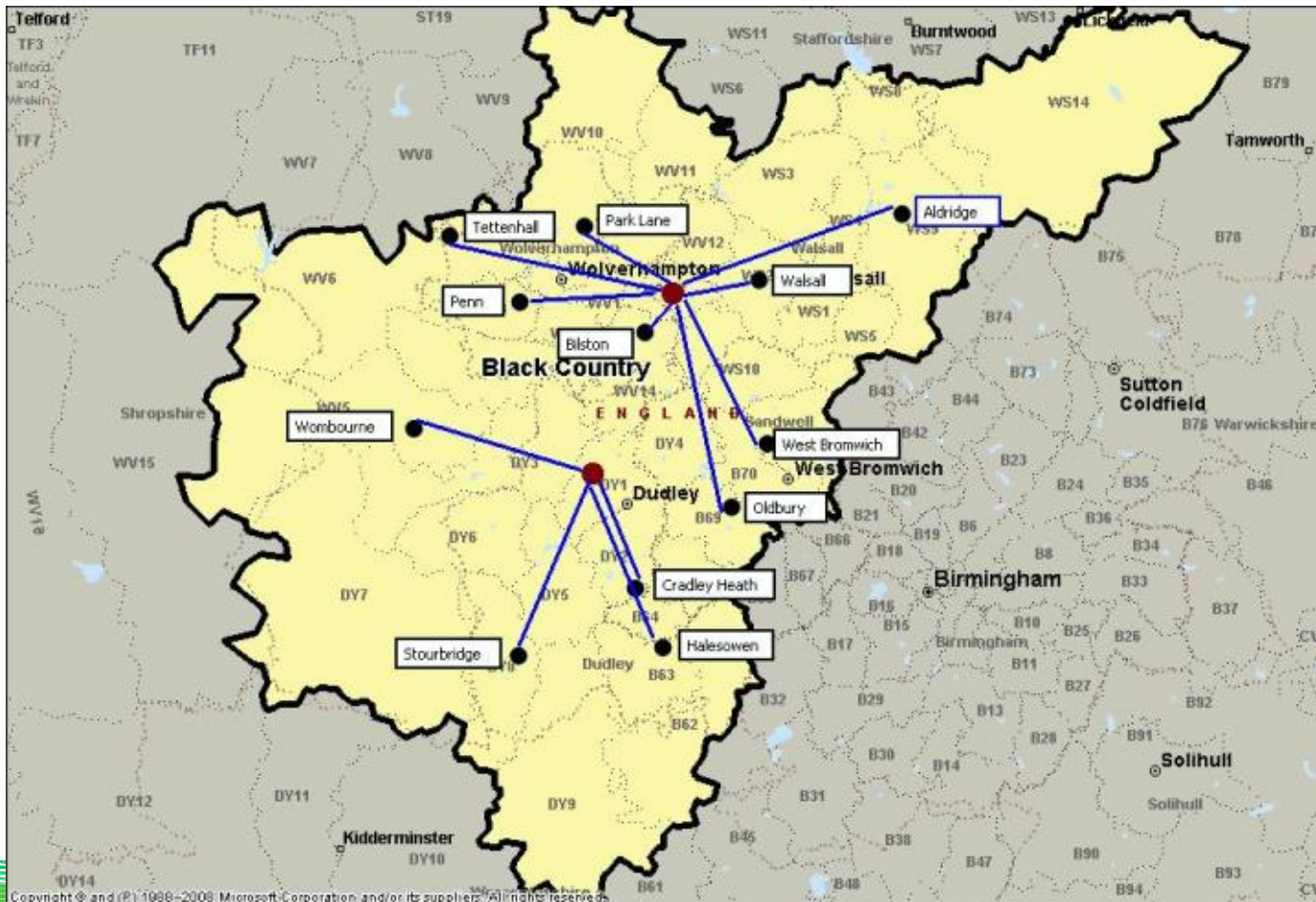


Wolverhampton

Trust us to care.

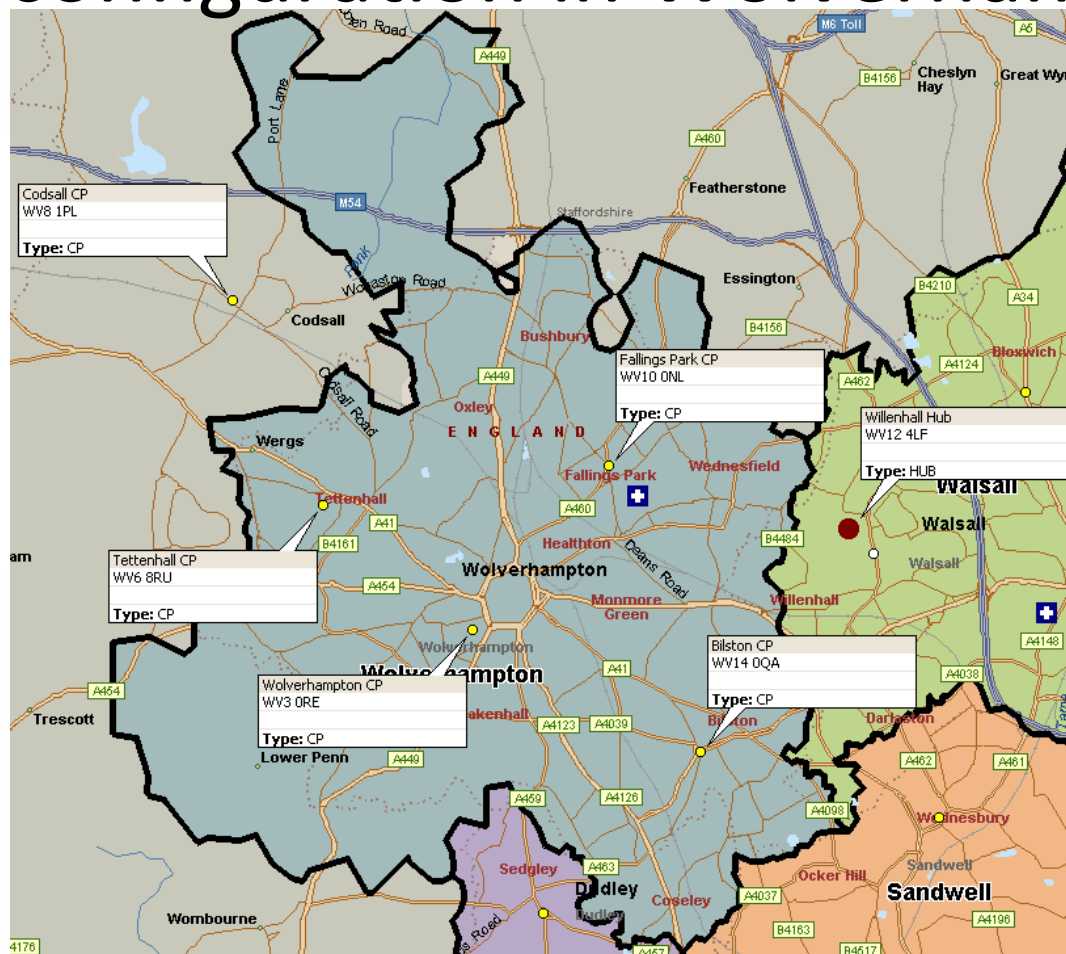


Old stations configuration



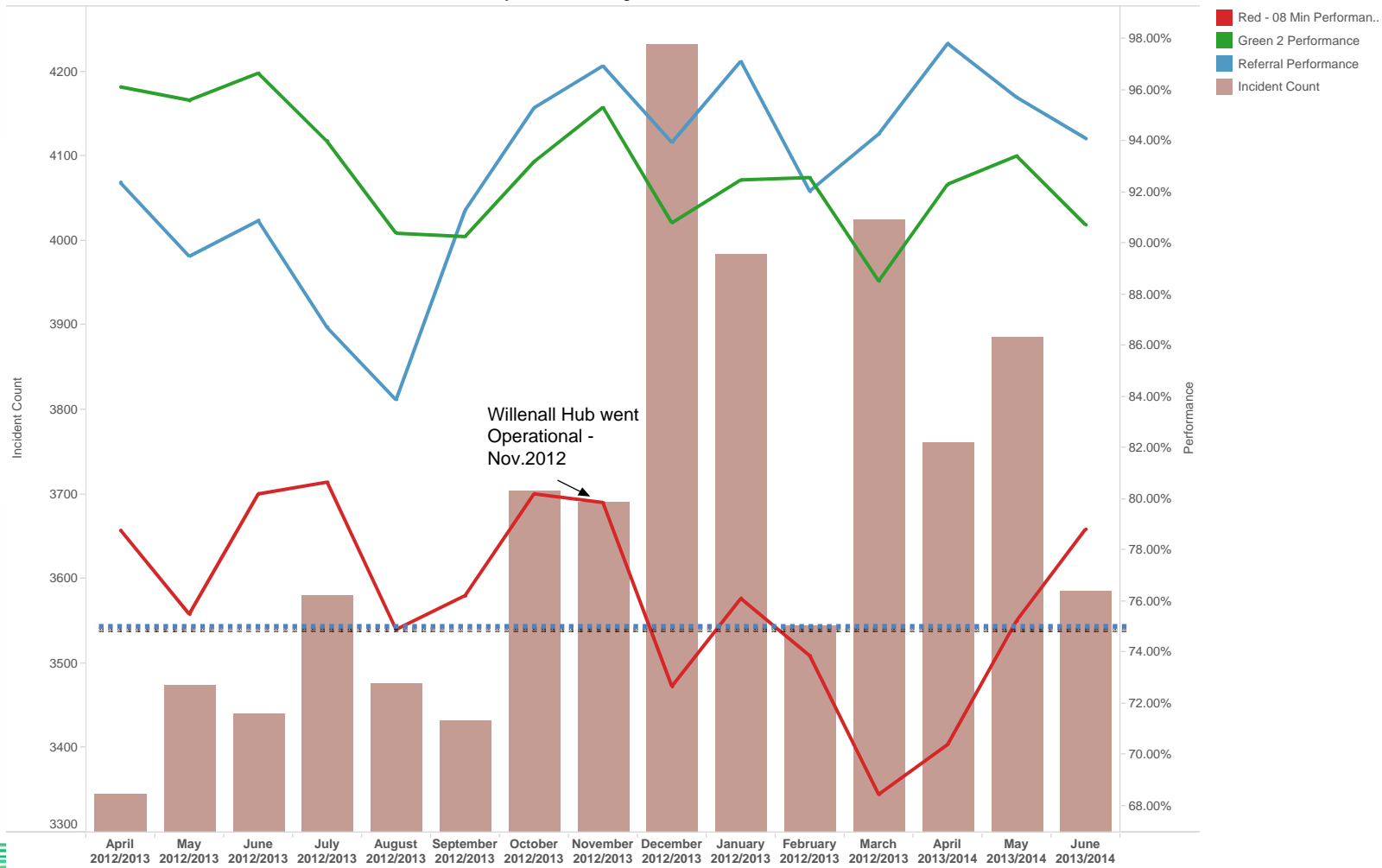


New configuration in Wolverhampton

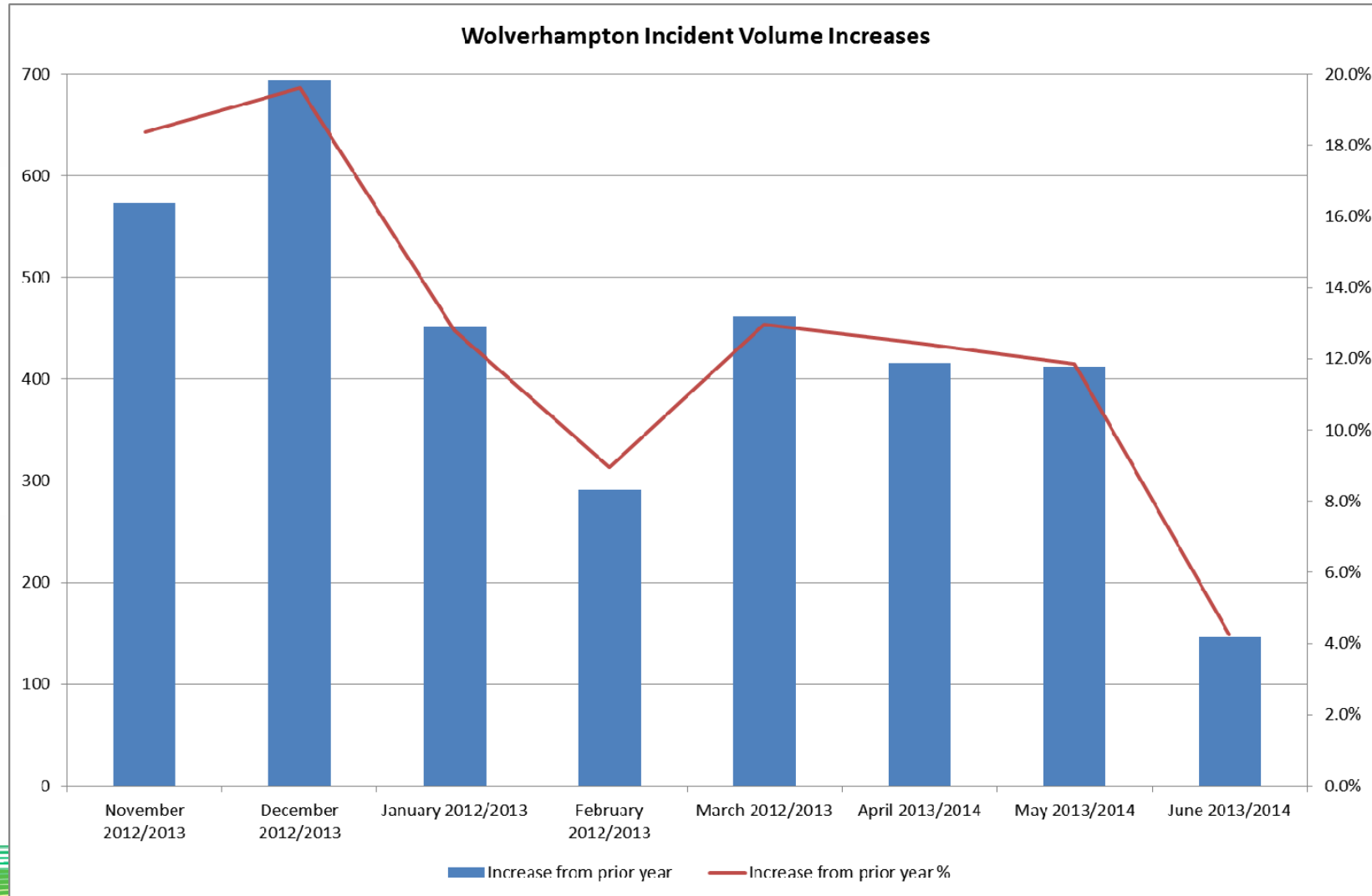




Wolverhampton Activity and Performance



Trust us to care.



Trust us to care.



Hospital Transports and Delays

